

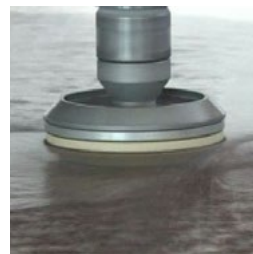
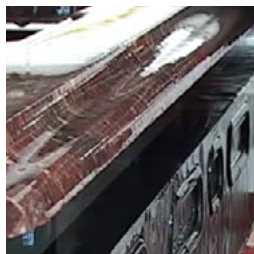
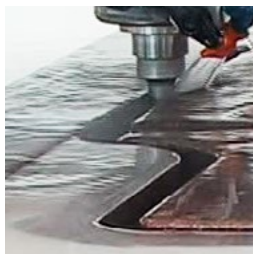
REDLINE



A PERFECT STONE PROCESSING CENTER

Turning head, fixed
in 4 positions: 0°, +/- 90°, 180°

Tilting head at 45° and 90°



SYSTAR XL 230 V/50-60 Hz single-phase
Art. 9905SXL2-M09

Packing:
shrink-wrapping, 4100 X 2100 X 1950 mm, 1260 Kg

SPECIFICATION

WORK TABLE

Work table 3.000 x 1.200 mm, made of natural stone, calibrated on the machine itself

WORK PIECE DIMENSIONS

- Height: max.140 mm, placed on suction cups (h=40 mm)
- Width: max. 1.600 mm
- Length: no limits

OPERATIONAL WORK STROKES:

- Profile tools: 3.550 x 1.450 mm
- Vertical cut: 3.550 x 1.520 mm (max.)
- 45° mitre cut: 3.350 x 1.270 mm
- Edge polishing: 3.400 x 1400 mm (max.)

FRAMEWORKS

- Tubular steel frame coated with epoxy paint
- Dimensions with template-holder closed: 4.000 x 2.000 x 1.950(h) mm
- Dimensions with template-holder raised: 4.000 x 2.600 x 1.950(h) mm
- Overall installation area: 4.000 x 3700 x 1.950 (h) mm
- Weight:1.250 kg

TEMPLATE HOLDER

Collapsible (built-in): 2.000 x 700 mm

OPERATING HEAD

- Electrospindle: 2.2 kW with internal lubrication.
- **Spindle:**
 - Stainless steel
 - Connection: ½" gas F
 - Rotation speed: from 1.500 to 12.500 rpm (controlled by vector drive)
- Vertical movement: automatic by electromotor
- Vertical stroke: 210 mm
- 9 spindle positions:
 - Vertical (for profiling and slot cutting)
 - 45° inclination (for disc cutting and bevel polishing) in 4 different positions: 0°, +/- 90°, 180°
 - Horizontal (for disc cutting and edge polishing) in 4 different positions: 0°, +/-90°, 180°
- Pneumatic lifting of the operating head
- Automatic internal and external tool lubrication (starts when motor is started).

ORTHOGONAL MOVEMENTS

- Adjustable to limit the work area
- Slide guides are equipped with adjustable mechanical limit switches.

WORKPIECE FIXING

2 distinct vacuum circuits hold the work pieces firmly in position, each composed of:

- Vacuum ejector pump
- Pressure regulator
- Manometer
- Suction cups: no. 6 Ø 90, no. 2 Ø 70
- Connection pipes: 4 m, Ø 6 mm

SUPPLY

- Supply tension: 230 V–50/60 Hz single-phase (18A)
- Pneumatic pressure: 3 bar
- Air consumption: 150 l/min
- Water pressure: min. 2 bar
- Water supply: min. 15 l/min

WATER CONNECTION

- Tool lubrication: internal through spindle and by 2 external water hoses
- Water pistol