



Profiling and polishing

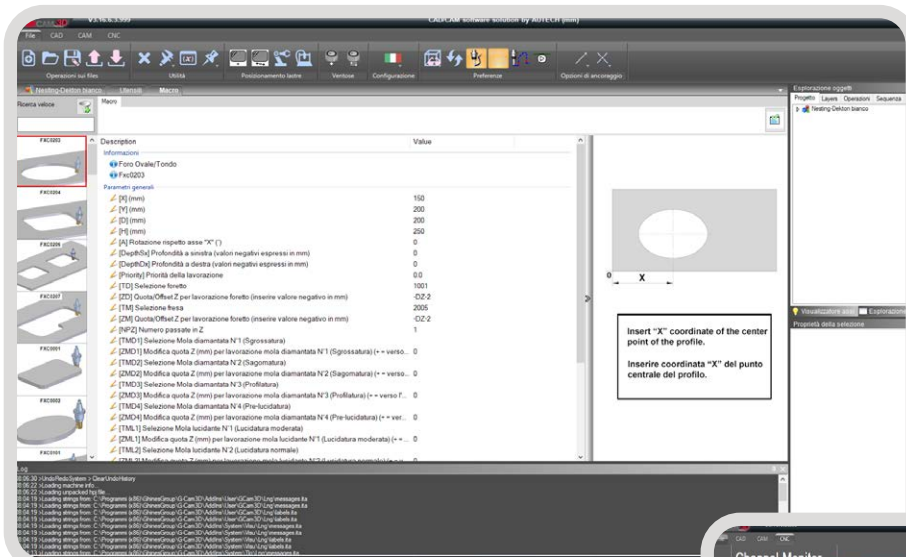


### CNC WORK CENTER

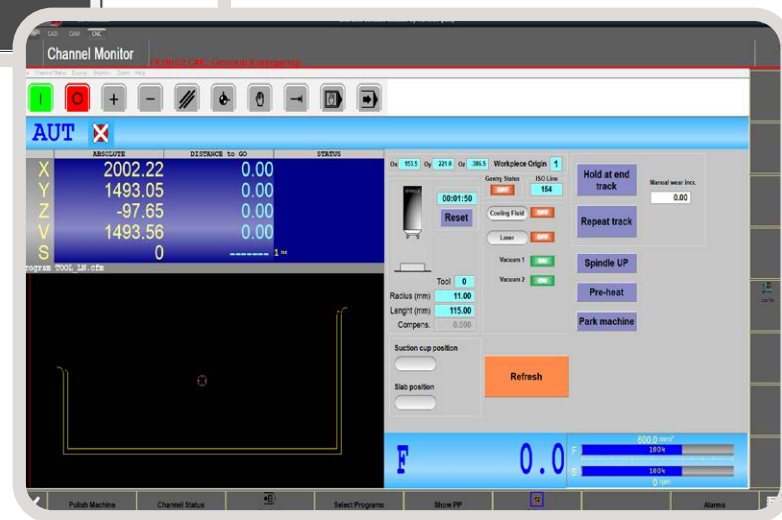
sysmatic EVO is the ideal machine to ease your work of cutting out sink bowls of any stone material, recessing inclined or flat drain boards, engraving bas-relief or letters, with extreme simplicity.

### AVAILABLE IN 3 CONFIGURATIONS

- 2.2 kW with manual tool change 1/2" GAS
- 3.7 kW with manual tool change 1/2" GAS
- 6.0 kW with automatic tool change ISO40



- Simple by macros
- Imports ISO and DXF files
- Intuitive CAD CAM
- Nesting
- Teleassistance
- Automatic backup



Ghines Group srl  
 via Marecchiese 364, 47923 Rimini (Italy)  
 tel. (+39) 0541 751080 fax (+39) 0541 751074  
 info@ghines.com www.ghines.com

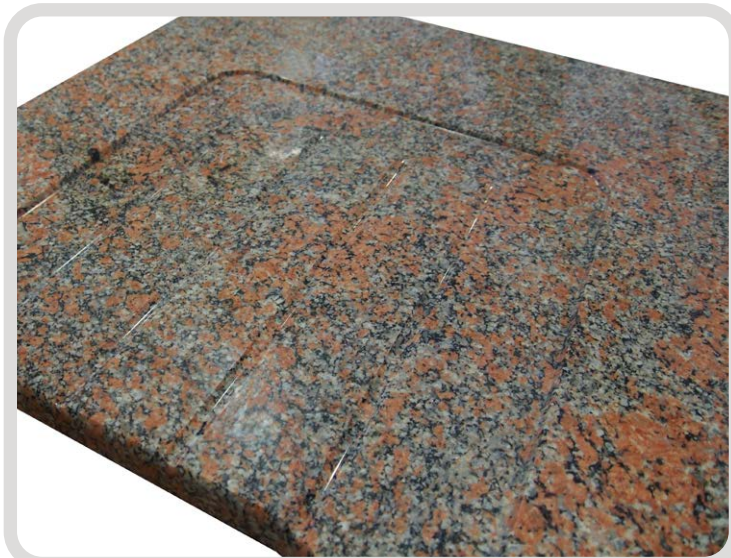
All the illustrations are purely indicative. The hereby enclosed data can be modified by the manufacturer at his discretion and without any notice.





**CNC workcenter**

A laser cross shows where to position the suction cups and the work piece on the work table.



Inclined recessed drain board



The design of the "Sysmatic Evo" allows to carry out any kind of work job on big slabs.

**TECHNICAL DATA**

**Work table**

- Work table: 1300 x 800 mm made of natural stone, calibrated by the machine itself
- Axis strokes: 1300 x 800 x 200 mm (-X -Y -Z)

**Structure**

- Monobloc frame and bridge in processed steel, protected by ceramic paint
- Footprint, weight:
  - 1/2"GAS: 2250 x 1650 x 2000 mm, 980 kg
  - ISO40: 2250 x 1900 x 2000 mm, 1100 kg

**Linear guides**

- Tempered and passivated steel with recirculating 4 rows ball bearings

**Operating head**

- 1/2"GAS: 2,2kW / 3,7kW
- ISO40: 6,0kW
- Rotation speed: 1500 - 10000 rpm
- Internal and external lubrication

**Axis movements**

- Hardened steel screws with ball bearings
- 3 brushless motors, 1.6 Nm torque

**Tools Rack:** 9 positions (ISO40)

**Vacuum system**

- Vacuum distributor to connect 9 suction cups
- 1 Vacuum pump, high efficient Venturi system, simple maintenance

**Control console**

- 21.5" touch screen, all parameters at a glance
- LAN and WIFI connection for remote assistance
- dedicated graphic card
- SSD hard disk
- Automatic back up, to avoid data losses
- Proprietary software GCAM 3D - developed to process marble and granite
- CAD-CAM supported by pre-installed macros to program quickly any work job in the simplest way

**Laser**

- 2 highly visible laser, to precisely position work pieces and suction cups

**Power supplies**

- Electric:
  - 400V 50/60 Hz three-phase (20A)
  - 220V 50/60 Hz three-phase (30A)
  - on demand UL and CSA
- Pneumatic: 6-10 bar pressure, 150 l/min.
- Compressed air: A compressor of min. 4 kW and 300 l tank is recommended
- Requires connection to water supply (min. capacity 20 litres/min, pressure min. 2 bar)



Engraving